



28 Harcourt Drive, Canterbury, CT2 8DP
£1,650 Per Calendar Month

Recently fully refurbished three bedroom terraced house situated in a popular neighbourhood to the western side of Canterbury, yet just a 15 / 20 minutes walk to the city centre and west station. The property has been sympathetically modernised, whilst retaining its original 1930's character, including feature fireplaces. Benefits include a recently fully fitted kitchen with appliances, tasteful new family shower room, and a ground floor extension provides additional living space as well as fully equipped utility room and downstairs cloakroom. The garden has been landscaped with porcelain patio area & lawn which leads to a large home office / studio, benefitting from its own separate rear entrance. A large blocked paved driveway to the front provides ample off street parking. Available early June. Sorry no students or smokers. Applicants will require a minimum household income of £49,500 for rent affordability checks.

GROUND FLOOR

Entrance Hall

Through original wooden door with wooden framed windows to sides. Stained wooden floorboards, staircase to first floor with two fitted cuboards beneath, radiator.

Living Room 11'5" x 13'6" (3.48 x 4.14)



Fitted carpet, double glazed bay window, ornamental feature fireplace with tiled hearth & insert and wooden surround. Radiator, phone point, Sky TV lead, glazed wooden folding doors lead through into:

Dining Room 10'4" x 11'5" (3.15 x 3.48)



Stained wooden floorboards, radiator, ornamental feature fireplace with tiled hearth & insert and wooden surround, double wooden doors lead into:

Study / Breakfast Room 15'1" x 7'1" (4.60 x 2.16)

New extension with wood effect laminate flooring, 2 x sky lights and recessed spotlights, radiator, double glazed patio doors to garden.

Kitchen 6'6" x 7'11" (1.99 x 2.43)



Wood effect laminate flooring, recessed spotlights, heat detector. Newly fitted kitchen with grey Shaker style matching wall and base units with wood block worksurfaces above with matching upstands. White ceramic sink and drainer with swan neck mixer tap, Beko induction hob with splashback and chrome canopy extractor fan above. Integrated Beko electric fan assisted oven with integrated Beko combination microwave oven and grill above.

Utility Room

Wood effect laminate flooring, recessed spotlights, heat detector, CO alarm. Single grey base cupboard with wood block worksurface above and recess beneath containing Beko washing machine. Freestanding stainless steel Kenwood fridge / freezer. Ideal combination gas boiler with 2 x wooden shelves to side. Through door into:

Cloak Room

Wood effect laminate flooring, recessed spotlight, WC, washhand basin in small grey vanity unit with grey tiled splashback, radiator, double glazed window, extractor fan.

FIRST FLOOR

Stairs & Landing

Fitted carpet, smoke detector, doors to:

Bedroom One 11'0" x 13'8" (3.37 x 4.17)



Fitted carpet, period feature fireplace, double glazed bay window, radiator.

Bedroom Two 11'0" x 10'8" (3.37 x 3.26)

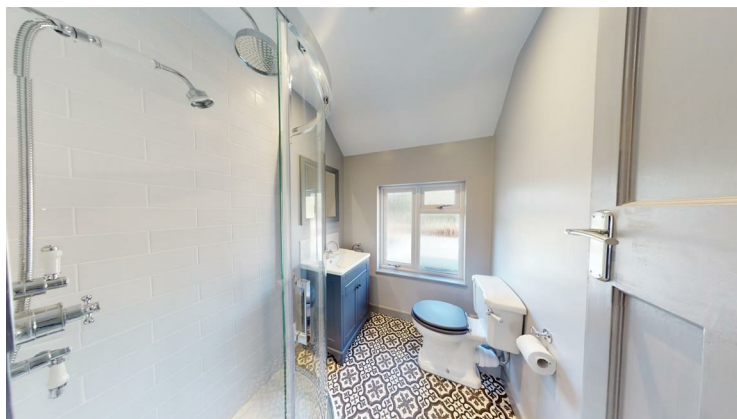


Fitted carpet, period feature fireplace, double glazed window, radiator.

Bedroom Three 5'8" x 7'1" (1.73 x 2.18)

Fitted carpet, double glazed window, radiator.

Shower Room



Decorative tiled flooring, recessed spotlights, matching white bathroom suite comprising of WC, wash hand basin in grey vanity unit with splashback tiling above and mirror. Fully tiled quadrant shower cubicle with chrome rainfall shower and separate showerhead. Double glazed window, chrome heated towel rail, loft hatch (Note: tenants use of loft is excluded from tenancy), extractor fan.

OUTSIDE

To Front - Block paved driveway to front providing off street parking for upto 4 vehicles (depending on size), wooden fencing to sides, small planted border in front of bay window, canopy storm porch above original wooden front door.

To Rear - Newly landscaped garden with porcelain tiled patio providing space for alfresco dining, leading onto newly turfed lawn with path leading to wooden home office / studio. Pedestrian gate at rear of garden leads to private road along rear boundary.

Office / Studio 26'2" x 13'1" (8.00 x 4.00)



Versatile office or studio building of wooden construction with patio doors and separate side entrance. The Side entrance leads into an entrance lobby with doors to a Cloak Room and Studio/ Office.

Cloak Room (1.92m x 1.26m) - wooden floor, walls and ceiling, white macerator WC, wash hand basin in vanity unit with electric water heater. Double glazed window, extractor fan.

Studio / Office (6.00m x 3.80m) - wooden floor, walls and ceiling, dual aspect double glazed windows, wall and ceiling lights, air conditioning / heating unit, patio doors to garden.

GENERAL INFORMATION

Rent £1,650.00 per calendar month

Holding Deposit £380.77

Deposit £1,903.84

Tenancy An Assured Periodic Tenancy

Viewings Strictly by prior appointment with the agent

Authority Canterbury City Council - Band C

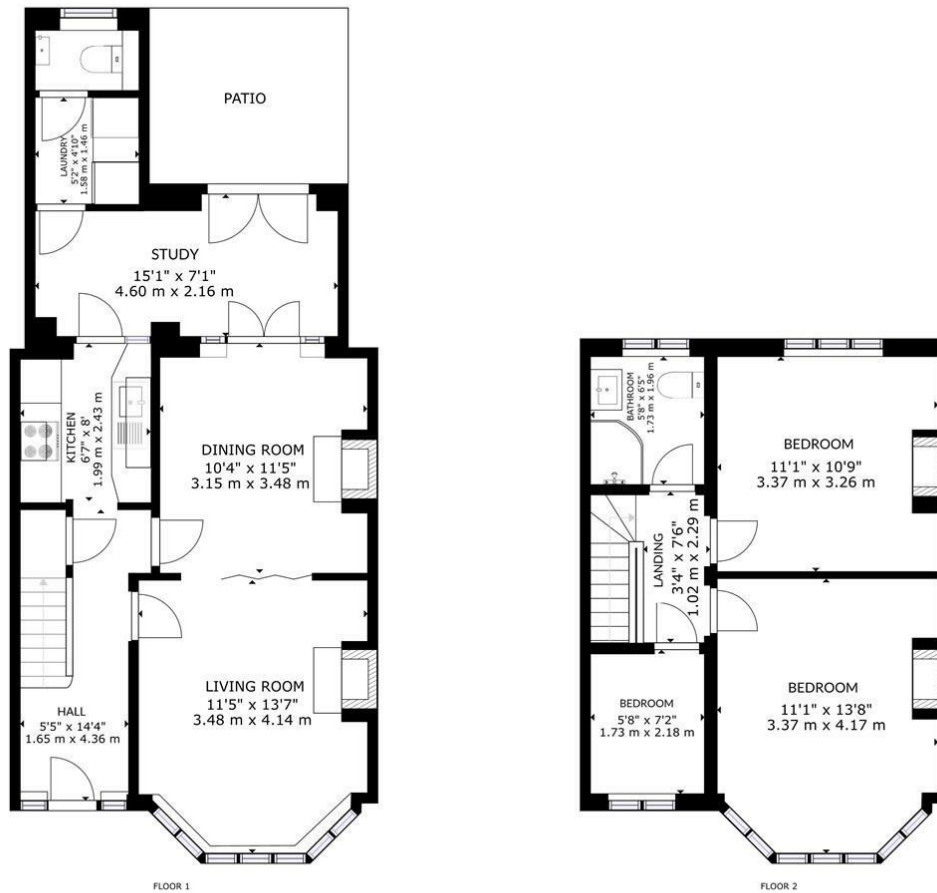
EPC Rating C - 70

Conditions Regret no smokers or students, family pet accepted (subject to professional carpet cleaning at end of tenancy)

Minimum Household Income Required £49,500 per year

Photographs and Virtual Tour Created April 2024

Floor Plan



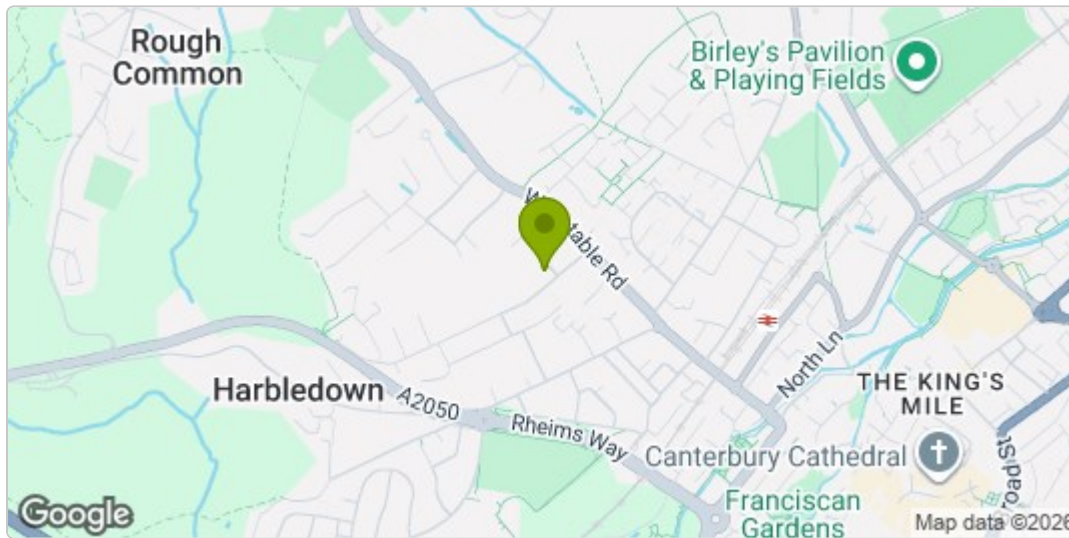
FLOOR 1

FLOOR 2

GROSS INTERNAL AREA
 FLOOR 1: 568 sq ft, 52.77 m², FLOOR 2: 409 sq ft, 38 m²
 EXCLUDED AREA: PATIO: 87 sq ft, 8.06 m²
 TOTAL: 977 sq ft, 90.77 m²
 SIZES AND DIMENSIONS ARE APPROXIMATE, ACTUAL MAY VARY.



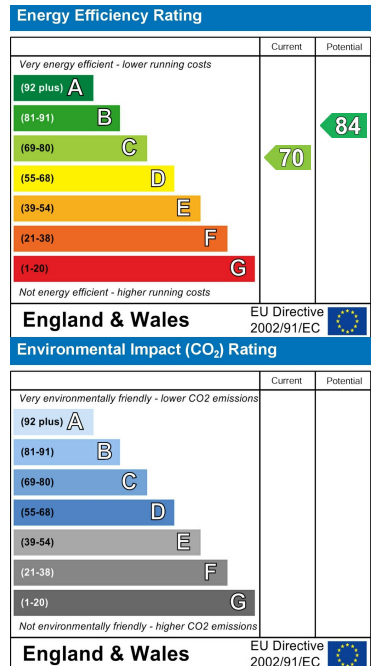
Area Map



These particulars, whilst believed to be accurate are set out as a general outline only for guidance and do not constitute any part of an offer or contract. Intending purchasers should not rely on them as statements of representation of fact, but must satisfy themselves by inspection or otherwise as to their accuracy. No person in this firm's employment has the authority to make or give any representation or warranty in respect of the property.



Energy Efficiency Graph



Residential, Commercial
and Rural Property Specialists

T: 01795 470556
F: 01795 470769

E: info@georgewebbfinn.com
W: www.georgewebbfinn.com

George Webb Finn is a trading name of George Webb Finn LLP, a limited liability partnership registered in England & Wales. Registration No: OC343609. A list of members of George Webb Finn LLP is open to inspection at the Registered Office: 364 High Street, Harlington, Hayes, Middlesex, UB3 5LF

